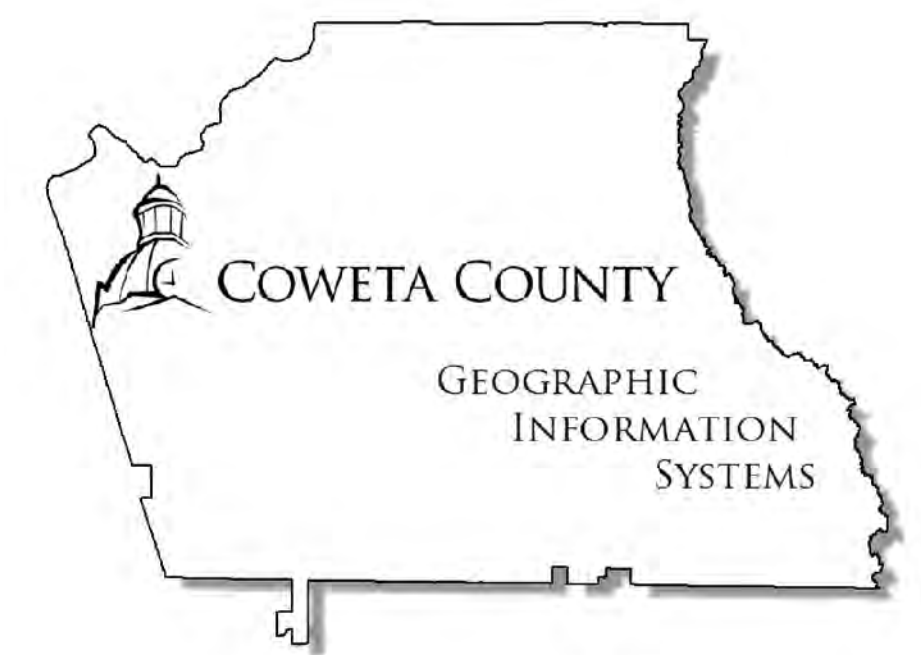
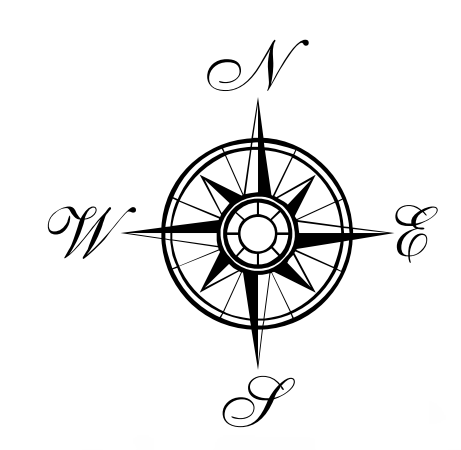
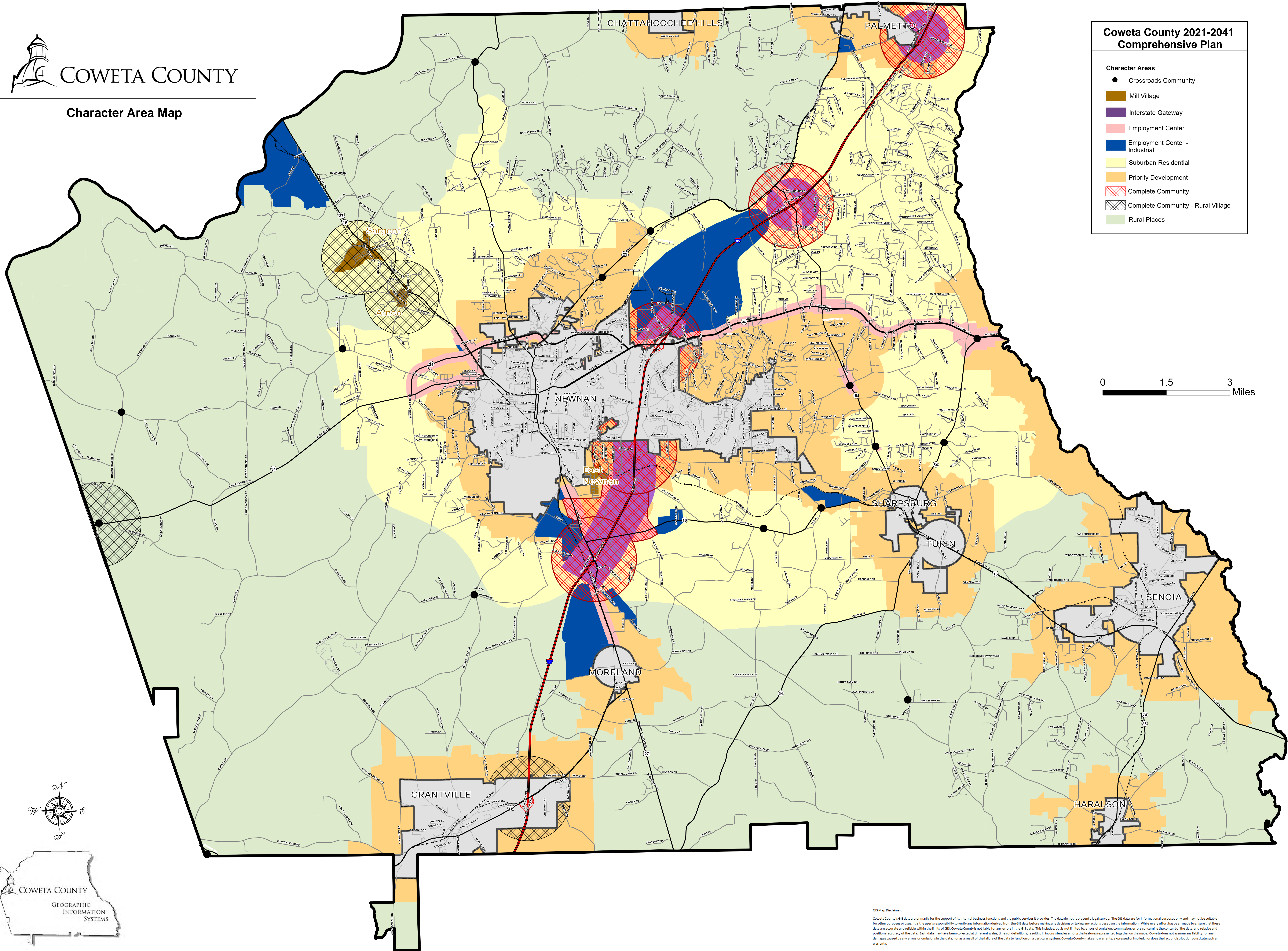
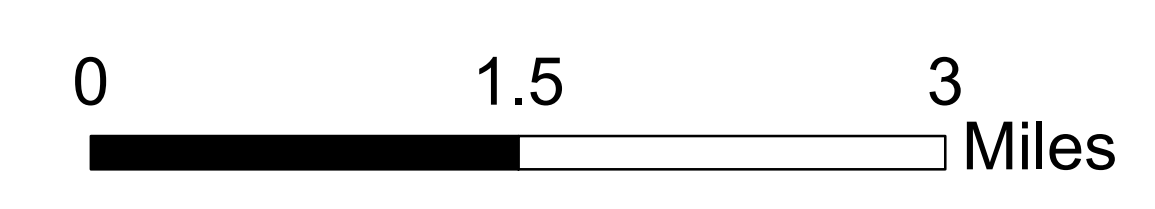


Character Area Map

**Coweta County 2021-2041
Comprehensive Plan**

Character Areas

- Crossroads Community
- Mill Village
- Interstate Gateway
- Employment Center
- Employment Center - Industrial
- Suburban Residential
- Priority Development
- Complete Community
- Complete Community - Rural Village
- Rural Places



GIS Map Disclaimer:
Coweta County's GIS data are primarily for the support of its internal business functions and the public services it provides. The data do not represent a legal survey. The GIS data are for informational purposes only and may not be suitable for other purposes or uses. It is the user's responsibility to verify any information derived from the GIS data before making any decisions or taking any actions based on the information. While every effort has been made to ensure that these data are accurate and reliable within the limits of GIS, Coweta County is not liable for any errors in the GIS data. This includes, but is not limited to, errors of omission, commission, errors concerning the content of the data, and relative and positional accuracy of the data. Each data may have been collected at different scales, times or definitions, resulting in inconsistencies among the features represented together on the maps. Coweta does not assume any liability for any damage caused by any errors or omissions in the data, nor as a result of the failure of the data to function on a particular system. Coweta County makes no warranty, expressed or implied, nor does the fact of distribution constitute such a warranty.